

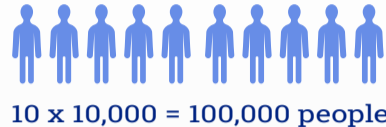
# COVID-19 News, You Can Use.

## From the Attend Safe News Desk...



As newsrooms tire of reporting pandemic data, possibly because a combination of "Monkey Pox" and barbecue recipe stories have them distracted, people may have missed these bits of information trickling out of the CDC as the coronavirus pandemic continues taking lives:

U.S. daily average of new COVID-19 cases consistently exceeded 100,000 patients in May 2022.



### 2020

The first year of the pandemic, that level of new cases didn't occur until the first week in November.



### 2022

There are MORE new cases per day now than in most of 2020.



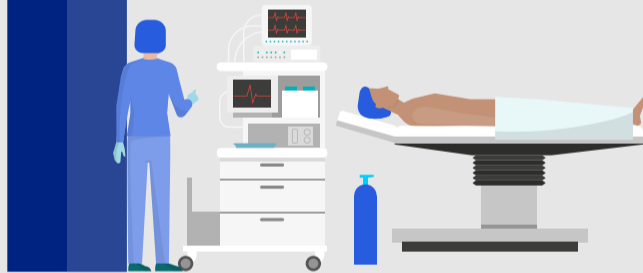
U.S. daily average of new hospitalized COVID-19 patients on May 20, 2022.

## 3,400 patients

- U.S. daily average of new hospitalized COVID-19 patients more than **doubled since mid-April.**
- The percentage of Emergency Department patients testing positive for COVID-19 **quadrupled since March 25.**



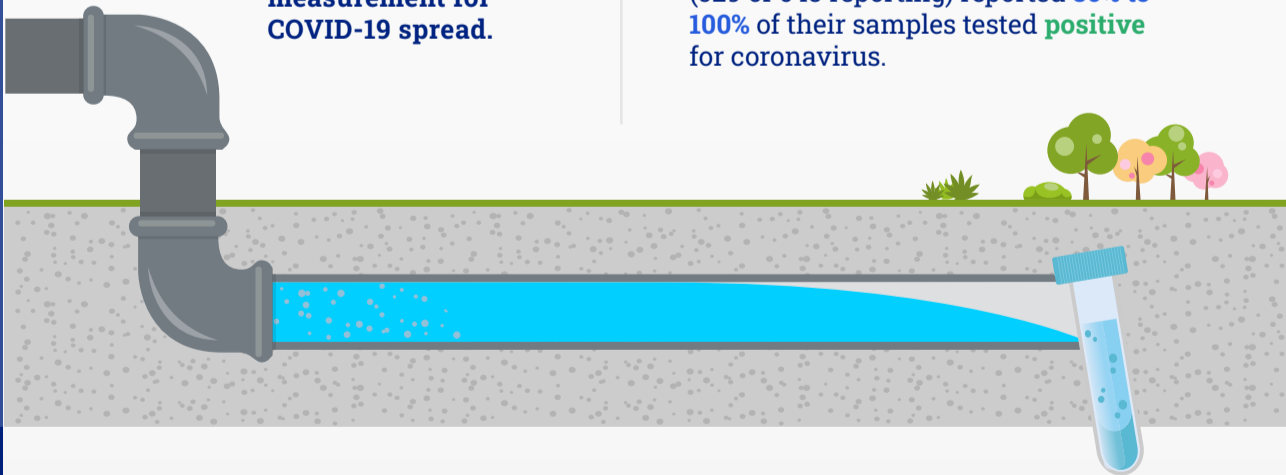
Despite occasional reports of current "low death rates" from COVID-19, on May 22, **The death rate remains higher than the low death rates seen in the late summer of 2021.**



Wastewater testing has become a common measurement for COVID-19 spread.

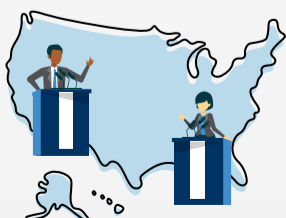
### As of May 20....

82% of **wastewater testing sites** (529 of 643 reporting) reported **80% to 100%** of their samples tested **positive** for coronavirus.



**The U.S. is approaching 10% of all counties returning to the High Risk category.**

No states are mandating any risk mitigations—only the U.S. territory of American Samoa, just recovering after a massive spike in cases, currently has any active mitigation measures. **Nonetheless, the CDC recommends wearing masks indoors or confined spaces in areas with high risk.**



Across the U.S., political leaders lack the will to reimpose unpopular risk mitigation protocols in an election year, leaving decisions about appropriate response measures to businesses, academic institutions and event organizers.